

POWER MONITORING & PROTECTION

ADJUSTABLE TRIP POINT AND STANDARD OUTPUT CURRENT SWITCHES HX08 SERIES AND H701



DESCRIPTION

The **Veris Hawkeye Hx08 Series** and **H701** current switches offer high performance with a wide array of amperage range options. These products can accurately detect belt loss, coupling shear, or other mechanical failure on loads from 1/5 to 100HP.



FEATURES

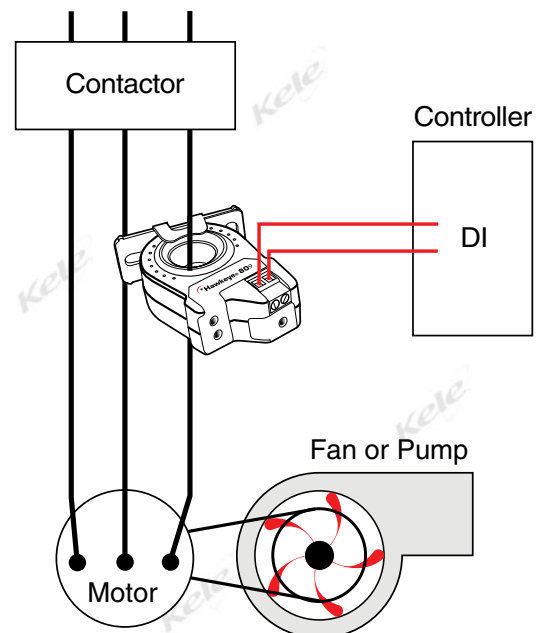
- High performance devices in split- and solid-core housings
- Minimum trip point as low as 0.5A (H608) ... eliminates the need for multiple wraps of the conductor through the sensor even on loads as small as 1/5HP
- Small size... fits easily inside small enclosures
- Self-gripping iris on the split-core housing for easy installation
- Status LEDs for easy setup and local indication (no LED on the H701)
- 1 Amp status N.O. contact for increased application flexibility
- All devices are 100% solid state
- All devices are polarity insensitive

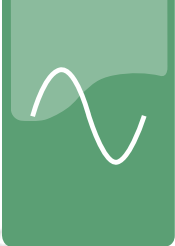


SPECIFICATIONS			
MODEL	AMPERAGE RANGE	MIN. TRIP POINT	HOUSING
H308	0.75 - 50A	0.75A or less	Split-Core
H608	0.50 - 175A	0.5A or less	Split-Core
H701	1 - 135A	1.0A or less	Solid-Core
H708	1 - 135A	1.0A or less	Solid-Core
H808	0.75 - 50A	0.75A or less	Solid-Core
H908	2.5 - 135A	2.5A or less	Split-Core
Supply Voltage		Induced from monitored conductor	
Frequency Range		50/60 Hz	
Insulation Class		600VAC RMS (UL), 300VAC RMS (CE)	
Output		N.O. 1.0A @ 30 VAC/DC	
Operating Temperature		5° to 140°F (-15° to 60°C)	
Operating Humidity		10 to 90% RH, non-condensing	
Enclosure Rating		NEMA 1	
Mounting		Foot	
Window Size		0.7 inch min.	
Hysteresis		10% (typical)	
Termination			
Max. Wire Size		24-14 AWG (22-16 AWG for H308)	
Torque		4.0 in-lbs (7.0 in-lbs for H308)	
Approvals		UL file #E150462, CE	
Warranty		5 years	

WIRING

Monitoring Fan/Pump Motors for Positive Proof of Flow



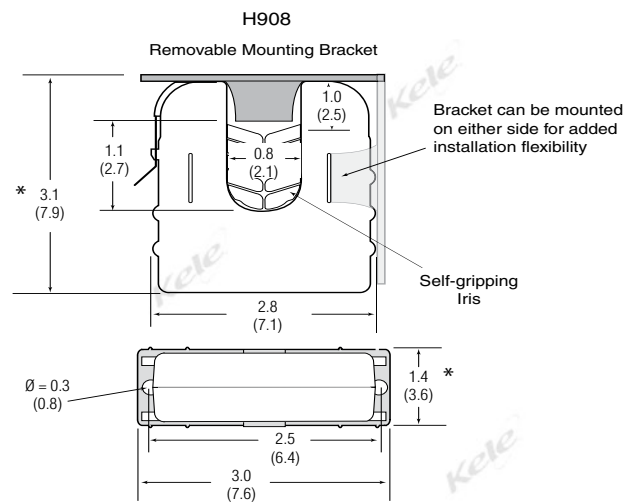
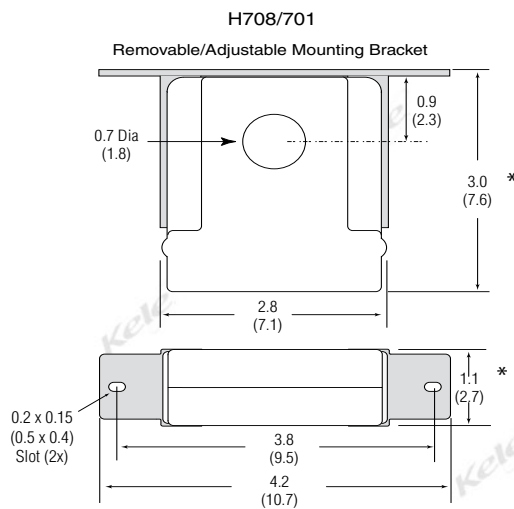
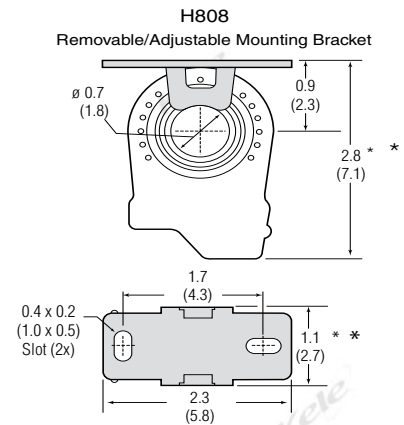
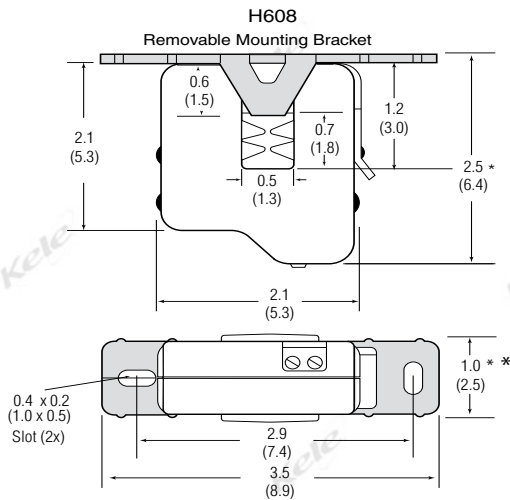
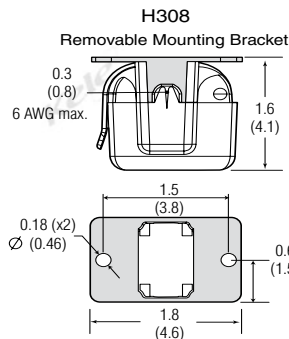


POWER MONITORING & PROTECTION

ADJUSTABLE TRIP POINT AND STANDARD OUTPUT CURRENT SWITCHES HX08 SERIES AND H701

DIMENSIONS

in
(cm)



ORDERING INFORMATION

MODEL

H308

H608

H701

H708

H808

H908

DESCRIPTION

Split-core current switch 0.75-50A, adjustable trip point with status LED

Split-core current switch 0.50-175A, adjustable trip point with status LED

Solid-core current switch 1.0-135A, adjustable trip point

Solid-core current switch 1.0-135A, adjustable trip point with status LED

Solid-core current switch 0.75-50A, adjustable trip point with status LED

Split-core current switch 2.5-135A, adjustable trip point with status LED